

Pacific Magnetic Lifters

Pacific Magnetic Lifters can be used in various industries for the lifting and moving of steel, engine parts, semi-manufactured goods and moulds. Due to its magnetic force, there is no need to use slings, clamps or other holding devices. This will eliminate the chance of damaging the lifted materials.

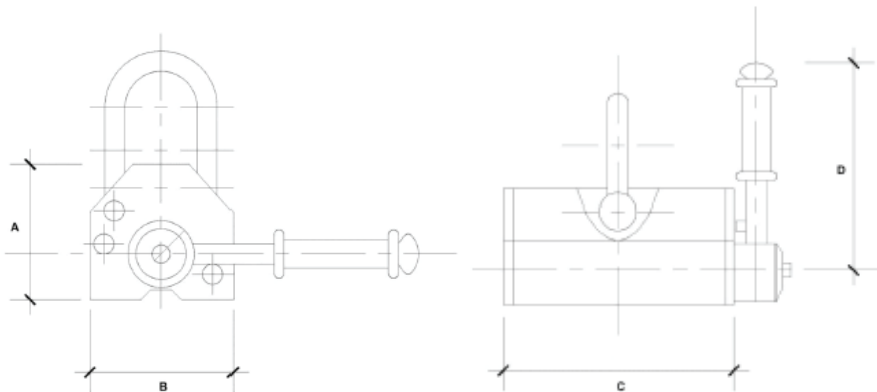
Features:

- The magnetic lifter features a breakaway force 3.5 times greater than the working load limit.
- Weight capacities are available from 100kg to 6000kg.
- No electricity needed which will increase product safety. Once operated there is less than 1% residual magnetism.
- The simple switch and safety button design allows for one handed operation.
- Use of plate with high-carbon content will reduce the absorbability to less than 50% of rated capacity. Use of plate with high carbon content is not recommended.



The information shown is to be used as a guide only. Specifications are subject to change without notice. All materials handling or lifting jobs should be assessed individually. Pacific Hoists products are NOT to be used for lifting or lowering persons.

Dimensions (in mm)



Model	PML-1	PML-3	PML-6	PML-10	PML-20	PML-30	PML-60
A	67	91	117	163	212	261	355
B	62	92	122	176	234	286	430
C	92	162	232	258	378	458	600
D	126	155	196	285	426	521	

Sydney - Head Office

24 Foundry Road
Seven Hills, NSW 2147
Australia

+61 (0)2 8825 6900

+61 (0)2 8825 6999

Western Australia

8 Monash Gate
Jandakot, WA 6164
Australia

+61 (0)8 6253 1000

+61 (0)8 9458 9840

Auckland NZ

11 Druces Road
Wiri, Auckland 2104
New Zealand

+64 (0)9 263 5566

+64 (0)9 263 5567

